



Seeking to preserve, protect and enhance land in perpetuity for the public benefit

lickinglandtrust.org



Left to right: Carol Apacki, Marilyn Jung, and Mary Kay Campbell at the 1990 Earth Day Parade

THE BEGINNING OF THIS LAND TRUST

Reflections on LLT's 30th Anniversary

By Kathy Larson

In the 1980's, the Larsons spent a week every summer at an Appalachian Mountain Club family camp in New Hampshire. We met a man there who was a volunteer for the first land trust in this country. The Society for the Protection of New Hampshire Forests was founded in 1905 for the creation of the Weeks Act. We became members and learned of their efforts in conservation and land protection. One of their newsletters in 1988 prompted me to think about starting a land trust in Granville. This came shortly after Bryn Du Farm was sold for development, not many working farms were left in Granville, and Raccoon Creek and its wetlands were in

continued on page 5

THREE NEW BOARD MEMBERS BRING DIVERSE SKILLS AND EXPERIENCE TO THE TRUST

By Brooke Kauchak

Sarah Lynn

Sarah Lynn has practiced law for many years, focusing on environmental and natural resources law. Her experience dealing with brownfield sites and numerous properties has developed her passion for working with public agencies, such as the Solid Waste Authority of Central Ohio (SWACO), ODOT, and the Ohio Attorney General, and with private sector clients, for example in her work at Ice Miller and Bailey Cavalieri.

She has had a rich and varied career and has gained a broad set of skills and knowledge in many areas. Alongside her career, Sarah has raised a son who will become a Staff Sergeant in the Army in Fort Wayne, Texas, and a daughter who is currently finishing her undergraduate degree.

Sarah came to Licking County in 2017 with her family and appreciates its beauty. She opened her own business, the

continued on page 2



THREE NEW BOARD MEMBERS continued from page 1

Lynn Law Group, in Newark, Ohio. Sarah hopes to help the Trust in any way she can. She adds value to real estate questions, title issues, conservation easement development, and environmental issues that pertain to land preservation. She wants to use her skill set to help the organization develop and grow.

Paul Davidson

Paul Davidson, a native of Licking County, has been farming since he was two years old and caring for livestock on his family's farm. He learned first-hand about managing farm operations at his parents' side. Paul has been a vital part of the Ohio Farm Bureau, active in both the State Board as well as the Licking County Farm Bureau organizations. Paul works as the Superintendent for Layton Services, while managing his own farm, purchased in 1994. Many of the projects Paul works on involve reinvigorating an area without

compromising its intrinsic environmental value. He works to design underground water systems that slow the rate of flow and create a more sustainable stormwater design. Paul's farm background has led to good stewardship and helped him build good conservation practices, focusing on the bigger picture through an innovative lens. Paul's favorite part of his job is being present during the construction process

and seeing a project go from start to finish.

Paul is also very active in 4H and Future Farmers of America, and enjoys being a

member of the Land of Legend Antique Tractor Club. He spends his summer at county fairs throughout the state of Ohio showing his tractors and enjoying the rich community of Licking County.



Maria Losh

Maria Losh is the Compliance Coordinator at the Ohio Ecological Food and Farm Association (OEFFA) Certification, an accredited organic certification agency. She is also a farmer at Everyday Acres in Granville, Ohio. She has a master's degree in Environmental Science and spent five years working in government and industry as an environmental consultant before moving to Columbus to work for OEFFA.

Maria raises heritage breed livestock, including a breeding flock of Red Dorking chickens and Guernsey milk goats, and she also focuses on family-scale vegetable production.

Maria is very excited to work with the citizens of Licking County to preserve green space in the community. She is also happy to help with compliance and reaccreditation of the Licking Land Trust through the Land Trust Alliance.

INTRODUCING BROOKE KAUCHAK, OUR SUMMER INTERN

By Amy Mock

Brooke Kauchak, a 3rd-year student at Ohio State University's School of Environment and Natural Resources, is a welcome new face around the LLT office this summer.

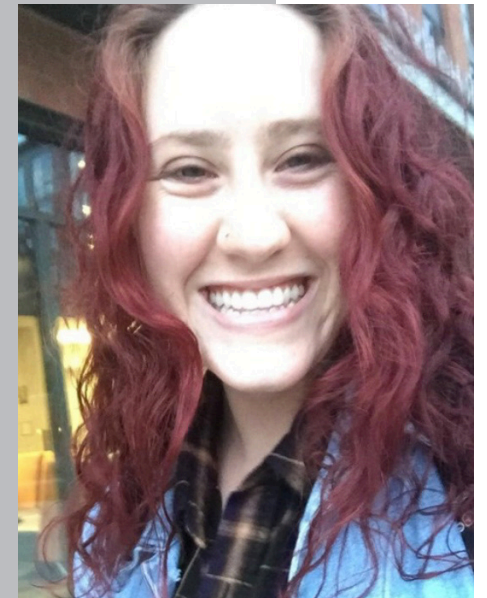
Brooke is majoring in the Environment, Economy, Development, and Sustainability program at OSU, a multi-disciplinary degree that focuses on the human dimensions of sustainability. She is specializing in international development.

The 2017 Granville High School graduate dove straight into the Trust's activities as soon as her spring semester finished. Brooke is taking on many aspects of the Trust's work, getting experience in tasks such as updating property documentation in the Trust office, spearheading our efforts to participate in Licking County's River Round Up, participating in annual easement inspections, and assisting with donor contacts and promotional material development for the "Farm-to-Fork" event, the organization's summer

fundraiser. There's plenty to do, and Brooke takes on each task with unflagging enthusiasm and a willingness to learn, making good use of her interest and knowledge in environmental science and sustainability.

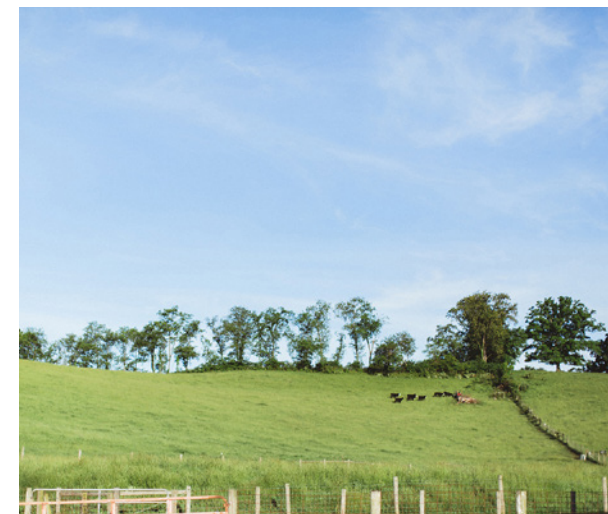
Brooke is a woman of many interests, and is also participating in an OSU study-abroad program this summer. She spent three weeks in Rwanda learning about the country's experience of genocide and its efforts to deal with its aftermath.

Brooke brings a wealth of skills and is a huge help in the busy summer season at the Trust. We are grateful to work with such a talented intern!



IN MEMORIAM

The Land Conservation community lost one of its champions this spring. Pat Deering was a tireless advocate for green spaces, not only in her professional capacity but also in her personal life. Pat served on the Licking Land Trust board, as an Ohio Certified Volunteer Naturalist, as the Farm Land Preservation Coordinator for the Licking County Soil and Water Conservation District, and as a leader in the Coalition of Ohio Land Trusts. She was a good friend and a great inspiration.



LICKING COUNTY HOSTS COLT CONFERENCE



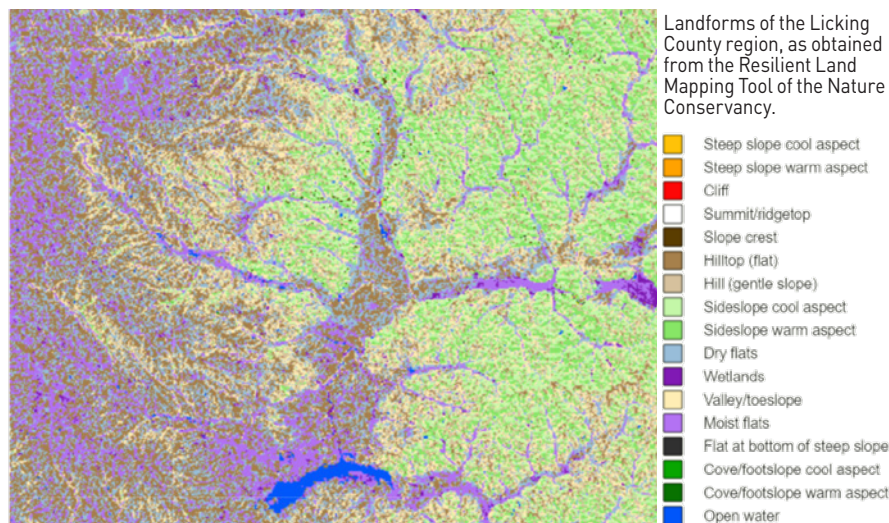
A session of the annual COLT meeting held at the DoubleTree by Hilton in Newark, March 2019.

In March of this year, Licking County had the honor of hosting the Coalition of Ohio Land Trusts (COLT) annual conference. COLT periodically holds meetings for representatives of the approximately 30 land trusts in Ohio and other interested parties, including Soil and Water Conservation officials. This meeting featured speakers from the Land Trust Alliance, the Nature Conservancy, the US Fish and Wildlife Service, the office of Senator Sherrod Brown, and Dorothy Pelanda, the Director of the Ohio Department of Agriculture. Participants were welcomed by Pat Deering of the Licking County Soil and Water Conservation Office and Richard Shiels, OSU Newark Emeritus History

Professor and past director of the Newark Earthworks Center. At the end of the two-day conference, attendees were treated to tours of the Octagon Earthworks in Newark and Spring Valley Nature Preserve in Granville.

So, what happens at a COLT conference? In addition to the opportunities for networking, these meetings provide a forum to hear from the experts on many legal, organizational, ecological and technological aspects of land conservation. Fodder for conversation at this year's meeting included the new Ohio Clean Water Fund, the ramifications of the newly renewed federal Farm Bill, funding opportunities for new projects, and new methods of acquiring and managing field data. Casual readers of this newsletter might be particularly interested to check out a new online mapping tool, presented by August Froelich, spatial scientist at the Nature Conservancy. This "Resilient Land Mapping Tool" allows the user to view areas according to their landscape diversity and habitat connectivity. In theory, areas that have greater habitat heterogeneity and greater connectivity to other habitat will be better able to withstand stress (like climate change) without losing ecological function. As we look to the future of land conservation, these resilient areas might be areas that deserve special attention.

To try the free mapping tool yourself, open an internet browser and search for Resilient Land Mapping Tool. If you are interested in learning more about the current or future work of COLT, visit: <http://www.ohiolandtrusts.org/>.



THE BEGINNING OF THIS LAND TRUST

continued from page 1

jeopardy. I spoke to directors of the Ohio Nature Conservancy and to a land trust in Northern Ohio for information as to how a community could start a land trust.



Wildflower Walk at Spring Valley in 1990

I reserved the library meeting room for February 16, 1989, and placed an article in the Granville Sentinel inviting interested community members to come to an exploratory meeting to consider founding a Granville land trust. I arrived early, set up a circle of chairs, and to my delight about 20 people came. The discussion was lively, many questions were asked and the sense of the group was positive. At the end of the meeting, I asked them if they wanted to form a land trust. The vote was yes. Walter Denny then passed his hat around the circle and our first \$20 for expenses was donated. We agreed to meet twice a month from March to the end of June and began again in the fall. We started with three trustees, chairman Kathy Larson, secretary Flo Hoffman and treasurer Theresa Overholser, and a few working committees. I found a Columbus law firm who guided me through the process and wrote the application for our 501c3 nonprofit status. On November 30th, we held a celebration with a speaker at the Lutheran Church social hall.

By the spring of 1990, we had more than 50 members with a working board and committees. For the Earth Day Parade on April

20th we had a number of displays on garden carts showing habitats, environment, clean air, and land protection for future generations. These were made by our creative members and their families. On April 21st, the Boy Scouts created a booth for our displays and handouts. This was a fun bonding event for all who participated. Members recruited others. Denison faculty and families, Granville Garden club members, Granville businesses, and many others joined. Our first conservation easement was donated along Raccoon Creek, the Harden Preserve.

So it began. Many of you have been members from the start and during the early years. All members have contributed so much to make the Granville Conservancy and now the Licking Land Trust thrive and grow. I have been a trustee of a New Hampshire land trust and also helped



Granville Land Conservancy 2nd Annual Meeting with speaker Steve Jordan, Director of Big Darby Creek Project from The Nature Conservancy

prepare an application for accreditation. I know how hard your trustees worked to achieve land trust accreditation. Special thanks to all who have served as trustees. You have grown this organization, spread the service area to surrounding counties, and have accepted many conservation easements and gifts of land. This is an amazing feat for a volunteer group. I am pleased that you have an office and Amy [LLT's Administrative Director]. I thank you all from the bottom of my heart.

5TH ANNUAL FARM-TO-FORK 2019 DATE: AUGUST 16, 6:30 PM

Local foods, local businesses, and local artists will be the theme of the Trust's annual fundraising event, Farm-to-Fork. Members and friends will celebrate the Trust's conservation work on Friday evening, August 16, at the historic Granville Inn, enjoying a tasting menu specially designed by the Inn's executive chef to highlight local food producers. The silent auction packages combine fun experiences, works from area artists, items and services donated by central Ohio businesses and environmental organizations, and musical and theatrical performances by leading local arts groups.

Tickets are \$50 and can be purchased online at lickinglandtrust.org/events or by contacting the Trust office at 740-587-4104.



Past events have sold out, so purchasing tickets early is recommended! The funds raised by this summer event are critical in sustaining the Trust's conservation work.

SPRING ACTIVITIES!

We were pleased to participate in the Dawes Arboretum Arbor Day festival again this year. The Licking Land Trust and Dawes Arboretum share some common goals. Both organizations value land conservation and work to connect people with natural areas. The Arbor Day festival is a wonderful opportunity to come together with people of all ages and celebrate this place we call home. The Trust held a wildflower hike at the Spring Valley Nature Preserve in Granville on Saturday May 4. Despite the rain, we were joined by a hardy group of nature enthusiasts. Our leader was Dr. Andy McCall, professor of Biology at Denison University. We

were fortunate to find many wildflowers in bloom, including four different kinds of violets, wild phlox, bluets, Jack in the pulpit, and Solomon's seal. Best of all—and right on schedule—the May apples were flowering!



FARM-TO-FORK SPONSORS, DONORS, AND VOLUNTEERS

The following individuals, businesses, and organizations contributed financial support, goods, and services to Farm-to-Fork, the 2018 major fundraising event. The Trust is very grateful!

Alfie's Wholesome Food
 Always Forward Crossfit
 Aqua Doc Pond & Lake Management
 Ron Abram
 David Baker
 Bellezza Salon
 Jim Bidigare
 Bird's Haven Farms
 Bird's Eye View Photography
 Bon Appetit
 Lyn Boone
 Breathe Yoga
 Broadway Pub
 Maggie Brooks
 Robin Brown
 Buckeye Blooms
 Buxton Inn
 Capuano's Pizza House
 Paula Colman
 Columbus Symphony Orchestra
 Comfrey Corner
 COSI
 Creative Coop
 Dawes Arboretum
 Denison University
 Donato's Pizza
 Electric Hair
 Energy Cooperative
 Englefield Oil
 Equine Veterinary Dental Services
 First Federal Savings
 Giant Eagle Grocery
 Granville Golfland
 Granville Milling
 Green Magic Apothecary
 Healing Arts Mission
 Homestead Beer Company
 Infinite Life Chiropractic
 Abram Kaplan
 John Klauder
 Landscape & Design
 Kegler Brown Hill + Ritter
 Kendal at Granville
 Licking Co. Soil & Water
 Licking Memorial Health Systems
 Licking Park District
 Luikart Heating & Cooling
 Laurie Mackenzie-Crane

Tom Martin
 Matesich Distributing Company
 MedBen Health Benefits
 Carolyn Mestemaker
 Mike and Diana Mickelson
 Margery Mitchell
 Moe's Original Bar B Que
 Michelle Newman
 Ohio Farm Bureau
 Orchard House of Granville
 Jurgen Pape
 Park National Bank
 Park Place Bistro
 Chuck Peterson
 Readers Garden Bookstore
 Reese Pyle Meyer PLL
 Refectory Restaurant and Bistro
 River Road Coffee
 Robbins Hunter Museum
 Rolls by the Pound
 Ross Granville Market
 Rick & Jane Scott
 Southgate Corporation
 Ginny Sharkey
 Snow Trails Winter Resort
 Sunbeam Family Farm
 Kay Studer
 Susan Studer King
 Studio Artiflora
 Sunflower Farms
 Susie's Bistro & Bakery
 Sweet Treats by Kristen
 Timeless Skin Solutions
 Ann Townsend
 Trader Joe's
 TrueCore Foundation
 Vail Series
 Village Flower Basket
 VO2 Fitness
 Wes Walter
 Weathervane Playhouse
 Welsh Hills School
 The Wilds
 Wilson's Garden Center
 The Works
 James Young/
 Kussmaul Gallery



Incredible out-pouring of support from bidders, too!

SPONSORS & FINANCIAL SUPPORTERS OF FARM-TO-FORK 2018

Gold Level (\$1,000+)

The Energy Cooperative
 MedBen Health Benefits
 Park National Bank

Silver Level (\$500+)

Ross Granville Market

Bronze Level Sponsors (\$250+)

Dawes Arboretum
 Denison University
 First Federal Savings
 Kegler Brown Hill + Ritter
 Kendal at Granville
 Licking Memorial Health Systems
 Matesich Distributing Company
 Mike & Diana Mickelson
 Reese Pyle Meyer PLL
 Rick & Jane Scott
 Southgate Corporation

FINANCIAL REPORT 2018

The financial condition of the Licking Land Trust remained very healthy during the 2018 fiscal year, with a balanced budget and continued success in fundraising. The organization remained debt-free.

As of December 31, 2018, total assets were \$605,880.61, of which \$360,041.32 comprised cash and investments. The \$245,839.29 balance of total assets represented the value of land and easements owned, as well as other miscellaneous assets as shown on the balance sheet.

Total operating cash received by the Trust was \$34,237. Of this amount, \$21,255 (62.1%) was membership dues and gifts. The second largest source of operating funds was the organization's fundraiser, "Farm-to-Fork." The event netted \$13,220, of which \$9,000 was allocated to operating, comprising 26.3% of the organization's operating cash for the year. Property stewardship expense in the amount of \$1,820 was allocated to operating from stewardship reserves. Finally, grants and other operating monies totaled \$2,162 (6.3%).

During the year, the Trust was also fortunate to receive a total of \$3,421 in memorial gifts, which are not managed as operating funds but reserved for special-purpose uses. In 2018, a \$500 allocation from the Don & Sally Wiper Memorial Fund was used to provide an honorarium for a much-appreciated student intern.

Operating expenses during 2018 were \$30,739, about 94% of budget. The top categories of operating expense were payroll wages and taxes (\$10,721); printing and postage (\$6,211); and office operations (\$5,800). Expenses for the Farm-to-Fork fundraiser, accounted for separately from operating, were \$3,431.

The Trust's investment accounts felt the effects of the overall negative markets in 2018. Its three Vanguard mutual funds ended the year with a total of \$226,974, having begun the year at \$232,764. No deposits or withdrawals were made by the Trust to these accounts, which are board-designated for the purposes of stewardship, legal defense, and donations/bequests. The Park National Bank trust fund, which is a board-advised discretionary fund, began the year at \$84,964. It was buoyed early in the year by a deposit of \$5,900 from the previous year's fundraising proceeds, and it paid 2018 investment fees of \$1,041. It ended the year at \$87,600.

The Licking Land Trust's financial statements are compiled on a monthly basis and reviewed by the Board's Finance Committee as well as by the full Board at each board meeting. Dues and donations, operating funds, investment accounts, and all expenses are reviewed, as well as the operating budget and its status, year-to-date, versus actual. The Finance Committee provides guidance to the Treasurer and recommendations to the Board concerning operating budget, investments, and other financial matters.

SUMMARY BALANCE SHEET:

ASSETS

Cash and Securities

Legal Defense Funds	\$	74,357.58
Stewardship Funds		99,589.26
Donations and Bequests		64,180.99
Memorial Gift Fund		6,001.00
Farm-to-Fork Fundraising		4,721.31
Board-Advised Trust Fund		87,600.01
Operating Accounts		23,591.17
Total Cash and Securities		360,041.32

Other Assets

Office Equipment and Computers	\$	3,000.00
Books in Library (33)		660.00
Conservation Easements		
16, total 1,049 acres		
(carried at \$1.00 each)		16.00
Trust-owned Land:		
7 parcels, 125 acres		
(estimated value)		242,163.29
Total Other Assets	\$	245,839.29

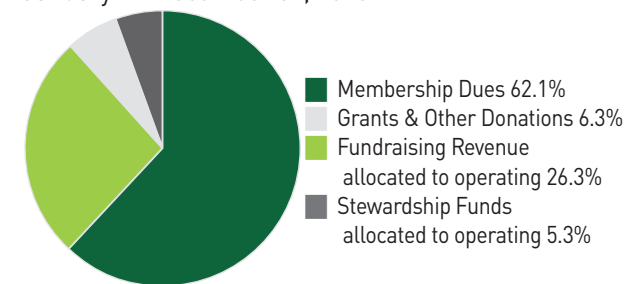
TOTAL ASSETS **\$ 605,880.61**

LIABILITIES AND EQUITY

Liabilities	\$	0.00
Equity		605,880.61
TOTAL LIABILITIES AND EQUITY	\$	605,880.61

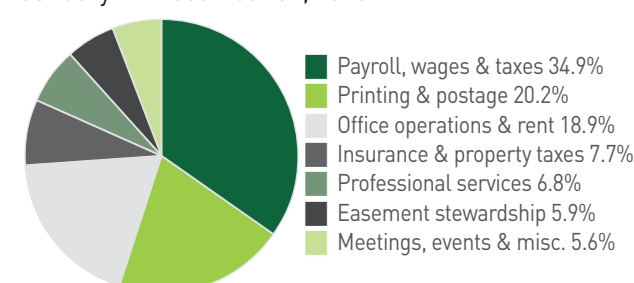
Total Operating Cash Received: \$34,237

January 1 - December 31, 2018



Total Operating Expenses: \$30,739

January 1 - December 31, 2018



PROTECTED LAND

The following table of Protected Land lists the Trust's easements and fee properties, and a timeline of acquisition. Over time, several have been combined into single easements or fee properties and appropriately named.

Name	Grantor	Licking County Location	Year	Ownership Acres	Easement Acres	
Harnden Mill Pond Preserve	Bob and Deb Harnden	Granville Township	1991	7.564		
Raccoon Creek Reserve	Granville Township	Granville Township	1993 2000 2001		16.330	
Boldon Reserve	Doug and Marilyn Boldon	Granville Township	1994	1.263		
Hartman Farms Nature Reserve	Ron Beitzel	Union Township	1995	7.350		
Hill Wetland Reserve	Cynthia Hill	Granville Township	1996	7.652		
Hankinson Road	Lee and Kathy Larson	Granville Township	1997		5.200	
Goose Lane Farm	William Custer	St. Albans and Granville Townships	1997		41.200	
Old Maid's Lane Farm	William Custer	Pataskala	1997		40.465	
Mount Parnassus	Howard LeFevre Robert and Susan Morrison	Granville	1999	0.587		
Kramer Farm	Arthur Kramer	Harrison Township	2002		81.455	
Neeley Farm	Larry and Janet Neeley	Walnut Township, Fairfield Co.	2003		75.300	
Mockingbird Hill Conservation Area	Judy Farris/Mockingbird Hill, Inc.	Granville and McKean Townships	2004		53.500	
Winter Farm	Ilse Winter	Hopewell Township	2004		72.400	
Bieberbach Farm	Marian Bieberbach	Franklin Township	2004		115.200	
Fryman Reserve	Dick and Ann Fryman	Granville Township	2005	36.575		
Park Trails	MI Homes	Newark	2005 2008		64.301	
James Farm	Patricia James and Jay Matthews	Union Township	2006 2014		133.723	
Spring Valley	Granville Township	Granville Township	2007		45.600	
Neeley Farm - II	Larry and Janet Neeley	Walnut Township, Fairfield Co.	2007		52.730	
Hughes Farm	Kayla Hughes	Newton Township	2007		92.770	
Brush Farm	Victoria and C. Bernard Brush	Pataskala	2007		64.400	
Carter Farm	Richard Carter	St. Albans Township	2008		98.830	
Beckett Farm	Tom, Louise, and Suzette Beckett	Bowling Green Township	2013		59.670	
Total Acres Protected:				1,174.065	125.292	1,048.773

MEMBERSHIP

Leaders (\$1000+)

BFK Foundation, Inc.
John Cox
Thomas and Wendy Miller
Tom and Janet Schultz
Bill and Jane Wilken

Stewards (\$500+)

Keith and Lyn Boone
Sally Crane Cox
Bill* and Janet Englefield
Paul Hammond and Tracee Laing
Bob and Joan Kent
Michael and Diana Mickelson
Candi Moore and Steve Mershon
Randall Ripley and Grace Franklin
Greg and Ginny Sharkey
Clarke and Sara Jean Wilhelm

Conservators (\$250- \$499)

Richard Carter
Gerald and Linda Ehram
Dave Fryman
Thomas and Erin Henshaw
Keith and Gretchen Hollingsworth
Doug and Susan Kaiser
Zaven and Susan Karian
Jeremy and Susan King
John Kralovec and Julie Houpt
Jodi Melfi
Larry and Janet Neeley
Tom and Peggy Shafer
Mark and Linda Smith
Doug and Beth Spieles
John H. and Sarah Wallace
Mark and Lori Weaver
David and Joanne Woodyard

Honorary Members (Land or Easement Donors)

Thomas and Louise Beckett
Ron Beitzel
Jon Bennet
Marian Bieberbach*
Doug and Marilyn Boldon

C. Bernard and Victoria Brush
Richard Carter
William and Lori Custer
Judy Farris*
Dick and Ann Fryman
Granville Township
Robert and Deborah Harnden
Cynthia Hill*
Kayla Hughes
Arthur F. Kramer *
Lee and Katherine Larson
Howard E. LeFevre*
John Matthews and Patricia James
Robert and Susan Morrison
Larry and Janet Neeley
Park Trails/MI Homes
T.J. Evans Foundation
Ilse Winter and John Miller

Businesses and Organizations

Aqua Doc Lake & Pond Management Company
Aramar, Inc.
BFK Foundation
Dawes Arboretum
Granville Garden Club
Granville Milling Co.
Granville Township
Jodi Melfi Design Ltd.
Licking County Soil and Water Conservation District
Licking Memorial Health Systems
Ross Granville Market

Membership

Mary Albright
Kenneth and Carol Apacki
Craig and Peggy Asplund
Patrick and Anne Aubourg
Gary and Suzanne Baker
Janell Baran and Peter Kuhlman
Ella Mae Bard
John and Cathryn Bauman
Thomas and Louise Beckett
John and Carole Begala

Clarke and Karen Berdan
Doug and Mary Bibee
Michael and Elaine Boaz
Trump and Carol Bradley
Al and Lori Brown
Greig and Robin Brown
Sylvia Brown and Sandy Runzo
C. Bernard and Victoria Brush
Brady and Ann Burt
Shana Byrd
Ashlin Caravana
Kim and Pam Carey
Ellen Chamberlin
Ed and Sue Chapdelaine
Joseph and Diane Charles
Kevin Clouse and Deborah Tegtmeier
Matthew Cooper
Richard and Kim Coplin
Roger* and Ellie Core
Fred and Suzanne Costaschuk
Jeff Darbee and Nancy Recchie
Elliot and Margie Davidoff
Irmagene Davis
Tim and Sarah Davison
Pat Deering* and Keith Ward
Dan and Diane DeLawder
Guy Denny
Jeanette Drake
Robert and Nancy Drake
Michael and Wendy Duffey
Benjamin and Lisa Englefield
Jim and Di Erickson
Jon and Dagmar Farris
James and Theresa Farris
Robin Feil
Vic Feldmiller
Mary Fitch
Dan and Ginny Fletcher
Michael and Janine Flood
William Flowers
Reed and Mel Fraley
Tod and Evelyn Frolking
Dick and Ann Fryman
Michael and Vanessa Fuson
Richard and Nancy Gallagher
Trevor Gamble

Florence Gibson and Family
Mark and Linda Giles
Jeff Gill and Joyce Meredith
Betty Goodridge
Chip and Sally Gordon
Jim and Jane Gordon
Neil and Joan Greene
Bill and Linda Habig
John and Betty Hankinson
Don and Debbie Haven
Ann Hendry
Lonnie and Brenda Hill
John and Mary Hinderer
Bob and Paula Hinebaugh
Christine Hodgson
Jim Holtsberry
Kayla Hughes
Betty Allen Hullinger
John Hunter and Karen Goodell
Arnold Joseph
Rosemary Joyce
Michael and Marilyn Jung
Jeff and Susie Kalinoski
Abram Kaplan
Jane Karaffa
Steven Katz and Constance Barsky
Chris and Kate Kenah
Norman and Suzanne Kennedy
Kathleen Kennedy
John Kessler and Eloise DeZwarte
Lyle and Elaine King
Paul and Jane King
Bill Kirkpatrick and Anna Nekola
John and Anne Klauder
Lee and Katherine Larson
Sarah Leavell
Jack and Jean Lepley
Anthony J. and Marianne Lisska
David and Jill Litle
Gary and Anne Love
Sarah Lynn and Peter Rothman
Krista Magaw and Andrew Carlson
Bob and Mary Ann Malcuit
Weldon and Mary Beth Mathews

Bill McConnell
Robert Meek
Luke and Lisa Messinger
Eric and Julie Mestemaker
Scott and Susan Miller
Larry and Brenda Mix
Amy Mock and Mort Guiney
Jean Luc and Amy Moreau
Keith and Patty Myers
Frank and Sandra Orth
Rodney and Jeanne Osborne
Ralph Ottensmeier
Theresa Overholser
Jurgen and Kirsten Pape
Helen Park
Bruce and Debra Parrish
Robert and Ruth Ann Parsley
Charles Peterson
Sue Powell and Loren Brosie
Justin and Meredith Pritchard
Dave Proctor and Wayne Piper
Fred Pryor
Barbara Pursley
Allen and Cindi Reeves
Susan Richardson
Mark and Pamela Roth
Mollie M. Roth
David and Jeanne Rouse
Lawrence and Anne Rowe
Bob Rush
Emily Rutherford
Wes and Donna Sargent
Sam and Heidi Schnaidt
Bob and Lynn Schweizer
Richard and Jane Scott
Steve and Linda Scott
Sara Sharp
Harry and Nancy Shepherd
Nancy Siegel
Barbara Sinsabaugh
Randy and Sandra Mathern-Smith
Geoff Smith and Jessica Rettig
Charles and Cheryl Snyder
Martijn Steger and Ann Townsend
Andrew Sterrett
Joe and Sally Studer

Phil and Kathy Stukus
Marilyn Sundin
Rebecca Swab
Donald G. Tritt
Richard and Mary Lee Van Meter
Jim Van Reeth and Ching-chu Hu
Hedda von Goeben
Doug Wagner
Wes and Beth Walter
Craig and Tina Washka
Michael and Heather Whitehead
Rose and Jack Wingert
Stephen and Holly Wittman
Don and Maureen Yablonski
Michael and Lisa Zehnal

* deceased



MEMBERSHIP



Licking Land Trust
P.O. Box 196
Granville, OH 43023

740-587-4104
lickinglandtrust@gmail.com
www.lickinglandtrust.org

Board

Jim Bidigare, Chair
Jeremy King, Vice Chair
Lyn Boone, Treasurer
Shana Byrd Tom Henshaw Mike Mickelson
Paul Davidson Maria Losh Rebecca Swab
Mary Fitch Sarah Lynn Doug Spieles

Administrative Director

Amy Mock

Newsletter

Jodi Melfi Design

The mission of the Licking Land Trust is the preservation and permanent protection of central Ohio green spaces – wetlands, woods, farmlands, riparian corridors, and scenic vistas – and education about the importance of green spaces and their conservation, all for the public benefit.



Support The Licking Land Trust

Renew your membership, join, or contribute online at lickinglandtrust.org



Donate securely online.

Detach and mail this completed form with your check to:
Licking Land Trust
P.O. Box 196
Granville, OH 43023

Name: _____

Email: _____

Address: _____

City, State, Zip: _____

Phone: _____

Membership Levels:

- Student: \$10 Business/Org.: \$150 Leader: \$1,000-2,499
- Individual: \$50 Conservator: \$250-499 Partner: \$2,500-4,999
- Family: \$50 Steward: \$500-999 Visionary: \$5,000