



Seeking to preserve, protect, and enhance land in perpetuity for the public benefit

lickinglandtrust.org

A MESSAGE FROM THE CHAIR

By Jim Bidigare



Vast changes are coming to Licking County with the Intel project. Many roads will be widened, and hundreds of acres of hard surface are scheduled to appear as buildings, driveways, and parking lots in the area of Jersey Township that is the headwaters for the South Fork of the Licking River. There are questions about how the vast quantities of runoff will be managed and what impact it will have on the county's waterways. Development pressure will result in the loss of farmland at an even great rate than we've been seeing. NOW is the time to think about preserving greenspace for fresh air, for parks, for waterways and saving precious farmland.

Landowners have risen to the call, and the Licking Land Trust is now discussing conservation easements with owners of some 700 acres of land. These owners are stepping forward to preserve their land as open space or productive agricultural land.

continued on page 3

FEATURED PROPERTY: PARK TRAILS RESERVE, A NATURAL HABITAT FOR FLORA AND FAUNA

By Melissa Gilbert

While hiking through the Park Trails Reserve, you can hear the drumming of a nesting pair of Pileated Woodpeckers, catch a glimpse of an Eastern Bluebird, and tumble through the forest understory into the violet glow of bluebells. Covering 64.3 acres in four parcels, the steeply sloped easement abuts the T.J. Evans Bike path and the Park Trails subdivision, along the Raccoon Creek Corridor, providing scenic vistas and natural areas to explore.

Donated by the M/I Homes of Central Ohio LLC to the Licking Land Trust in 2008, the easement provides habitat for forest-dependent species, including over 60 species of birds, raccoon, squirrels,

continued on page 4



TRUST TIDBITS

- Farm to Fork 2022 – Saturday, August 13 at 6:30 pm
LLT's 8th annual Tasting and Silent Auction will be held at Moon Hall on the Denison University campus. Purchase tickets online at www.lickinglandtrust.org
- Spring Valley Picnic - September 17, 2022 Noon
Visit your local Farmer's Market and bring some goodies to our community picnic at Spring Valley Nature Preserve. Join us for yoga in the park and a nature poetry slam!
- Annual Meeting on Land Conservation – November 10, 2022
- Licking County Adventure Passport Program - Sponsored by Licking Land Trust and Explore Licking County. Inside the Adventure Passport, is a list of local outdoor events and activities to explore and engage with nature in Licking County. Passport Pick Up Locations: Dawes Arboretum, Granville Public Library, Readers' Garden, and the Granville Area Chamber of Commerce
- The Licking Land Trust Financial Report for 2021, and current list of Protected Land online in July www.lickinglandtrust.org/about-us

LANDOWNERS LEARN OF OPTIONS FOR PRESERVING FARMLAND, GREEN SPACE

By Jim Bidigare



On May 5, a capacity crowd descended on the Homestead Public House at the Cherry Valley Hotel to hear about options for preservation of farmland and

open space in Licking County. This is an annual, competitive program that provides for a payment of up to \$2000/acre to a landowner agreeing to put land into this perpetual program.

The Licking Park District's Director Richard Waugh and Board Chair Jim Kiracofe spoke about options for park land. They encouraged landowners to consider donating land to the Park District, in hopes of preserving greenspace that is available to the public for recreation. The Park District has properties in most parts of the county, but is looking to have more in the northeast quadrant.

The event was sponsored by the Licking Land Trust, the Licking County Soil & Water Conservation District, the Licking Park District, and the USDA's Natural Resources Conservation Service.

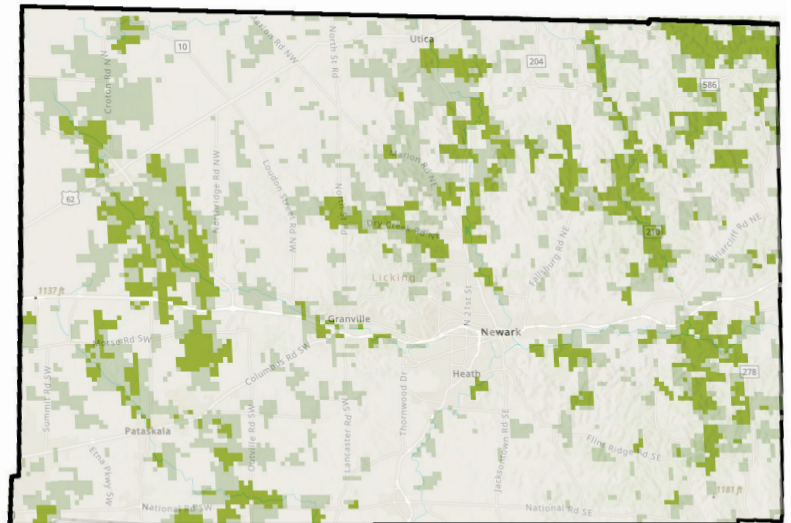
Vice-Chair Jeremy King explained that the Licking Land Trust has been in existence for over 30 years. Its mission is to preserve open space, woodlands, wetlands, and farms. In most cases, property owners donate conservation easements, agreeing to preserve the land in perpetuity, and retain ownership and control of the land. Some property owners have also donated entire parcels of land to the Land Trust.

After hors d'oeuvres and refreshments, options for farmers and land owners were outlined. Licking Soil & Water administers the Ohio Department of Agriculture's Local Agriculture Easement Purchase Program in Licking County. This program requires that the land stay in agricultural production and is com-

STUDENTS PLAN FOR THEIR FUTURE, THE TIME IS NOW TO CONSERVE GREENSPACE IN LICKING COUNTY

by Abigail Stitt, Allison Fisher, Caroline Treudler, Mary Casto
Graduating seniors at the School of Environmental and Natural Resources at Ohio State University created a conservation prioritization model for the Licking Land Trust as their senior capstone project in the Spring, 2022. Currently the Trust responds to interest from landowners to start the conservation easement process. But the fast-growing development that is sweeping across Licking County make it a crucial time to preserve critical habitat. Supervised by Professor Rebecca Swab, LLT Board member, the students focused on helping the Trust devise a more comprehensive approach to planning and seeking areas to conserve.

The students researched the most important aspects of conservation to help visualize the areas of highest conservation value in Licking County. They chose 9 criteria which include presence of streams or bodies of water, size of plot, biodiversity, landscape diversity, climate resilience, climate



resilience, connectivity to other important habitats, and access. The group gathered information from several sources such as the Census, Nature Conservancy, and GIS data. They quantified conservation benefits, making it is easier to see which areas are richer in resources.

The darkest green areas on the map shown below are estimated to be the most valuable to protect in Licking County. A swath along the western side of the county, and several areas along the eastern side of the county are of highest value.

WELCOME OUR NEW BOARD MEMBER!

Having lived most of her life in rural Ohio, **Wendy Bittel** has seldom resided more than a mile from a corn field or a farm. She has been concerned about land use and protecting wildlife habitat since she in college. Growing up, her family always had a garden in the backyard and many of her weekends were spent “helping out” and exploring their family friend’s farm. Her own 3 acres are her passion where she works to add native plants and habitat, to weed out invasives, and to promote biological diversity. She is an avid fan of author Doug Tallamy and the Homegrown National Park initiative as an effort to create more habitat for native species.

Wendy first served the Licking Land Trust as the office administrator from 2009-2015. She was deeply involved in the initial Land Trust Alliance accreditation process. Currently she works at the Granville Public Library as a Community Outreach Coordinator responsible for teen and adult

programming. There she has led a few environmental initiatives including the Books and the Bees book club, the iNaturalist Licking County Atlas of Life project, the Citizen Science project collection, and bringing in guest speakers on variety of scientific and environmental topics.



Wendy attended Miami University where she majored in Interdisciplinary Studies with a focus on psychology and sociology. She has three children, four dogs, two cats, and one husband. They keep her busy. She is currently working on her master’s degree in Library and Information Sciences at Kent State University.



OUR SUMMER INTERN HANNAH ROCKWELL

I am a graduate of Granville High School and a rising sophomore at the University of Illinois at Urbana-Champaign. At UIUC, I am studying Agricultural & Biological Engineering with a minor in Sustainability, Energy, & Environment. My interest in environmental science and conservation began in high school, where I was a team captain for the Envirothon Team and co-founder of the Bee Club. Now, I am a member of Illinois Solar Decathlon, an organization that designs, builds, and donates solar-powered homes that implement emerging sustainable practices and technology, as well as proposes projects that improve the energy efficiency of the campus. I am also a member of the UIUC Student Sustainability Committee, which advocates for and funds projects in sustainability on campus. I currently serve on the executive board for my school’s chapter of the American Society of Agricultural and Biological Engineers and play for the UIUC women’s lacrosse team. I’m super excited to work with the Licking Land Trust and the Youth Conservation Ambassadors this summer!

A MESSAGE FROM THE CHAIR continued from page 1

Reaccredited by the national Land Trust Alliance, the Trust’s practices and policies have been inspected, and the Trust is judged to be well-run and here for the long haul. The hard-working Trustees have been striving for excellence, and this excellence is reflected in the good reputation of the Licking Land Trust in the conservation community.

Financial support of the Trust was strong in 2021, as the organization exceeded its membership goal of \$22,000. The highly successful Farm to Fork event netted almost \$18,000. The Trust also received a second grant under the CARES program, and LLT’s Youth Conservation

Ambassadors activities were supported by a grant from the Young Leaders of Licking County Giving Fund of the Licking County Foundation. Details of the Trust’s finances will be in the 2021 Annual Report on the organization’s website, www.lickinglandtrust.org.

We appreciate the support of our members – through membership dues, donations, and participation in Trust events and activities. NOW is the time to do something to preserve our land; please consider volunteering to help in this important work. There are many opportunities for YOU to make a difference.



UPCYCLED CRAFT CORNER WITH LICKING COUNTY RECYCLING

By Director Andrea Krava & Administrative Assistant Nikki Summers

Happy summer from Licking County Recycling! Here's an "upcycled" craft - perfect for the 4th of July. You'll be upcycling a paper towel tube to make a festive rocket! Follow the instructions below, and if you have any questions about this craft, or about recycling in Licking County, give us a call at 740-670-5125. Follow us on Facebook and Instagram, too.



HOW TO MAKE YOUR ROCKET

- Use the hole puncher to punch 3 holes on one end of the paper towel tube, for attaching streamers later. Cut a hole or slit in the middle of the tube to (later) insert the paint stirrer or dowel rod.
- Decorate the paper towel tube and the paint stirrer/dowel rod with stickers, paint, etc.
- Slide the ribbons through the punched holes and tie them in.
- Make the pointed rocket top: Fold the construction paper circle up into a cone, glue the ends together, and glue it on top of the end of the paper towel tube.

ROCKET CRAFT SUPPLIES NEEDED

- Paper towel (or toilet paper) tube – paint or color it
- Construction paper circle – cut a slit halfway to shape into a cone
- Ribbons or streamers for the end of your rocket
- Paint stirrer or dowel rod to hold your rocket
- Stickers, paint, markers, etc. to decorate the paper towel tube
- Scissors and a hole puncher
- Liquid glue (glue sticks don't hold well)



- Finally, insert the paint stirrer or dowel rod into the slit or hole, so your rocket can be held.
- Once the glue has dried, hold on to your rocket and let it fly through the air!



FEATURED PROPERTY: PARK TRAILS RESERVE continued from page 1

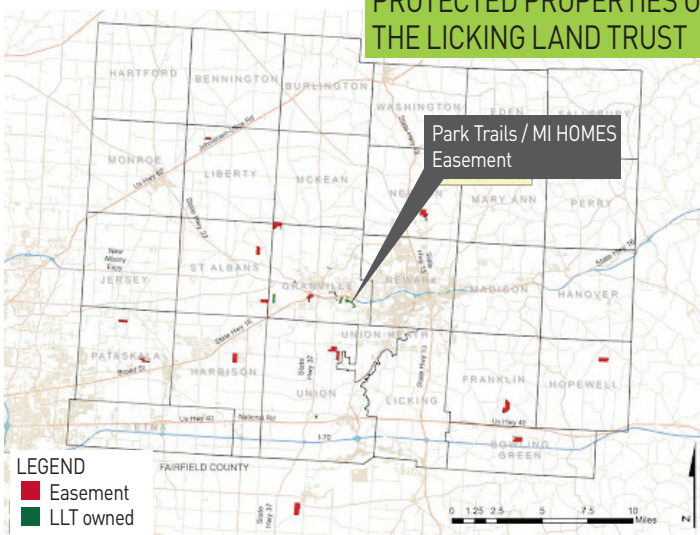
rabbits, red fox, groundhogs, white-tailed deer, amphibians, and reptiles. Several bonded pairs of red-bellied woodpeckers are nesting in the canopy of the woodlands, with successional beech-maple and oak-hickory punctuating the landscape.

The woods provide an outdoor area for children to participate in "green play," a space where vivid imaginations turn the forest into a magical place. According to Jeremy King, LLT Board Trustee and steward of the property, "Our Park Trails properties are a wonderful resource for the entire Park Trails neighborhood. They offer a place for kids to explore and a beautiful setting for backyards."

The Reserve also provides important stream corridor protection, with native plant species helping to prevent erosion of the local creek bed, only yards from the easement border. The valleys and plains of the region are formed of Wisconsin loamy till derived from sedimentary rock.

LLT has made several improvements to the Reserve over the past 14 years, including felling dead trees that posed a threat to neighboring properties. The Trust will continue to maintain the reserve as a natural habitat for native fauna and flora, to both reduce ecological stress in the area and promote the biodiversity of the ecosystem.

PROTECTED PROPERTIES OF THE LICKING LAND TRUST



BRINGING THE FOREST TO YOUR BACKYARD!

By Chedo Milkovich, James Kelling, Sean Jackson, Mara Rothacher, Zachery Spires

On a sunny spring day, Licking Land Trust volunteers planted nearly 300 new native trees and shrubs in four areas around the Park Trails Reserve in Newark, OH. The project was planned and led by a group of graduating seniors at the School of Environmental and Natural Resources at Ohio State University as a part of their senior capstone project, supervised by Professor Rebecca Swab, also an LLT board trustee.



The OSU students first assessed invasive species growth along the forest edges of the Park Trails Reserve easement owned by the LLT. Increased invasive species can lead to loss of biodiversity, increased pests and pathogens, and a long-term population

PARK TRAILS RESERVE TREE PLANTINGS



Legend: Species planted at each site
● - American Sycamore, Bitternut Hickory, Pin Oak, and Black Walnut
● - Spicebush, Serviceberry, Bitternut Hickory, and Red Maple
● - Flowering Dogwood and American Hornbeam
● - White Oak, Red Oak, Black Cherry, Persimmons, Hawthorn and Spicebush

decline in animal and plant life. In order to promote healthy forest growth the OSU students and LLT board decided to first remove prominent patches of invasive species such as privet and honeysuckle. The OSU students then selected and ordered a variety of native trees and shrubs based on sun exposure, soil quality, and need for reforestation of the border areas.

On April 10th 14 volunteers gathered in Park Trails including the OSU capstone students and friends, Granville High School students, and LLT Board members. After the OSU students did a quick demonstration of planting procedures, groups split off amongst the four sites and worked for several hours to dig, plant, and fertilize. LLT was able to purchase the trees and shrubs thanks in part to the Trust's Rutherford Memorial Fund, established by friends and family members of Robert Rutherford upon his death in 2019.

STEPS TO A CONSERVATION EASEMENT

By Jen Jacquot and Amy Mock

The mission of the Licking Land Trust is to preserve Central Ohio green spaces for the benefit of present and future generations. LLT can preserve land by acquiring property through donation or purchase; or assisting the property owner in establishing and donating a conservation easement to LLT. In the latter case, the landowner retains ownership and sets the terms of the conservation easement. The landowner then donates the easement to an independent organization, such as the Licking Land Trust, which is responsible for maintaining the easement forever.

The Process of Establishing an Easement

1. Contact us to let us know you are interested in conserving your property.
2. Explore the property with an LLT Board Member. An LLT representative will walk the property with you and discuss your goals, including what future uses of the property you would like to allow or prohibit. We will also discuss topics with you such as getting a current property appraisal, tax benefits of donating an easement, and other questions you may have.
3. Communicate your decision about pursuing an easement with the LLT.
4. Present a proposal to the LLT Board – the LLT representative who met with you will write a report and present it to the Board for approval to pursue an easement.
5. Write the Conservation Easement - the LLT will draft an easement describing the aspects of the property that you want to protect and restrictions for future uses. The draft will be reviewed by an attorney, and discussed with you. We encourage landowners to seek advice from their own lawyer, financial or tax advisor. We can provide a list of independent attorneys.
6. Approve the Final Easement - After the easement has been revised to the LLT's and the landowner's satisfaction, the final document will be presented to the LLT Board for review and approval.
7. Sign and Record the Easement - Once approved, the LLT will obtain notarized signatures from an LLT officer and the landowner, then record the easement with the appropriate county government. The Licking Land Trust will monitor and guarantee the preservation of your property in perpetuity, working with you, your heirs, or anyone else who owns the property in the future.

LLT MEMBERS 2021

Visionaries (\$5000+)

John M. Cox

Partners (\$2500)

Gary and Kay Clarke

Leaders (\$1000+)

BFK Foundation

Jim Erickson

Chip and Susan* Freeman

John Kralovec and Julie Houpt

Tracee Laing and Paul Hammond

Licking County CARES Act and
Nonprofit Relief Fund, Licking
County Foundation

Sandra Mathern-Smith and
Randy Smith

Mike and Diana Mickelson

Susan and Zaven Karian

Thomas and Wendy Miller

Young Leaders of Licking County
Giving Fund, Licking County
Foundation

Stewards (\$500)

Lyn and Keith Boone

Richard Carter

Kayla Hughes

Jeremy and Susan King

Candi Moore and Steve Mershon

Jean Luc and Amy Moreau

Richard and Jane Scott

Greg and Ginny Sharkey

Doug and Beth Spieles

Rebecca Stilson

Mark and Lori Weaver

Conservators (\$250)

Linda and Jerry Ehram

Kim and Richard Coplin

Grace Franklin

David Fryman

Russ and Susan Ginise

Thomas Hall

Tom and Erin Henshaw

Doug and Susan Kaiser

Rita and Richard Kipp

Trish and Phil Koons

Stephen and Michele Layman

Jack and Jean Lepley

Andrew and Deborah Merritt

Amy Mock and Mort Guiney

Larry and Janet Neeley

Jon and Julie Renner

Mark and Linda Smith

John H. and Sarah Wallace

Bill and Jane Wilken

David and Joanne Woodyard

Individual \$50

Ken and Carol Apacki

Lynne Ashbrook

Craig and Peggy Asplund

Anne and Patrick Aubourg

Gary and Suzanne Baker

Mary and Doug Bibee

Jim Bidigare

Janell Baran and Peter Kuhlman

Ella Mae Bard

Constance Barsky and

Steven Katz

J.R. and Judith Beall

John and Carole Begala

Wendy and Ed Bittel

Michael and Elaine Boaz

Carol and Trump Bradley

Dennis and Jonna Brandon

Al and Lori Brown

Robin and Greig Brown

Sylvia Brown and Sandy Runzo

Aarica Burwell

Ashlin Caravana

Kim and Pam Carey

Ed and Sue Chapdelaine

Diane and Joseph Charles

Judith and Rich Clark

Cameron Close

Kevin Clouse and Deb Tegtmeier

Matthew Cooper

Susan and Fred Costaschuk

Jeff Darbee and Nancy Recchie

Margie and Elliot Davidoff

Paul Davidson

Irmagene Davis

Tim and Sarah Davison

Dan and Diane DeLawder

Mrs. Norman Drake

Robert and Nancy Drake

Michael and Wendy Duffey

Tobias Dunbar

Vera Eaker

Benjamin and Lisa Englefield

John and Dagmar Farris

Robin Feil

Mary Fitch

Ginny and Dan Fletcher

Michael and Janine Flood

William Flowers

Reed and Mel Fraley

Tod and Evelyn Frolking

Loriann Fuhrer and Neal Bell

Vanessa and Michael Fuson

Trevor Gamble

Mark and Linda Giles

Jeff Gill and Joyce Meredith

Betty Goodridge

Kenneth and Sarah Gordon

Joan and Neil Greene

Brian, Nancy, and Janet Gregory

Linda and Bill Habig

John and Betty Hankinson

Don and Debbie Haven

John and Mary Hinderer

Christine Hodgson

Keith and Gretchen

Hollingsworth

Jim Holtsberry

Tim and Nancy Hughes

Betty Allen Hullinger

John Hunter and Karen Goodell

Jen and Ryan Jacquot

Rosemary Joyce

Graham Judge

Marilyn and Michael Jung

Sylvia and Jeff Kalinoski

Abram Kaplan

Jane Karaffa

Stan, Debbie, and

Brooke Kauchak

Chris and Kate Kenah

Kathleen Kennedy

Norman and Suzanne Kennedy

Robert and Joan Kent

John Kessler and

Eloise deZwarte

Paul and Jane King

Thomas King

Anne and John Klauder

Lynn Kosin

Michael and Laura Laughlin

Sarah Leavell

Anthony J. and Marianne Lisska

David and Jill Little

MEMBERSHIP

Dan Long
Sarah Lynn and Peter Roth
Bill McConnell
Mary Ann and Bob Malcuit
Sarah Marks
Weldon and Mary Beth Mathews
Nestor Matthews
Robert Meek
David Melick
Luke and Lisa Messinger
Eric and Julie Mestemaker
Laura Mickleson and
Matt Kretchmar
Scott and Susan Miller
Brenda and Larry Mix
Keith and Patty Myers
Robert O'Neill
Rodney and Jeanne Osborne
Theresa Overholser
Kirsten and Jurgen Pape
Bruce and Debra Parrish
Robert and Ruth Ann Parsley
Charles Peterson
Sue Powell and Loren Brosie
Meredith and Justin Pritchard
Dave Proctor and Wayne Piper
Fred Pryor
Barbara Pursley
Beth Rabb
Christine Ramsey and
Steve Matheny
Alan and Cindi Reeves
Jessica Rettig and Geoff Smith
Susan Richardson
Susan Risner
Mark and Pamela Roth
Mollie Roth
David and Jeanne Rouse
Lawrence and Ann Row
Bob and Nancy Rush
Emily Rutherford
Wes and Donna Sargent
Steve and Linda Scott
Heidi and Sam Schnaidt
Lynn and Bob Schweizer
Nancy and Lesa Siegel
Karen and Rick Semer
Nancy and Harry Shepherd
Janet Spillane
Joe and Sally Studer
Marilyn Sundin

Ann Townsend and
Martijn Steger
Donald G. Tritt
Richard and Mary Lee Van Meter
Kim Vohs
Susan and Steven Walker
Wes and Beth Walter
John and Jan Weigand
Shauna Weyrauch
Sara Jean and Clarke Wilhelm
Hedda Windisch von Goeben*
Rose and Jack Wingert
Lisa and Michael Zehnal

Honorary Members (Land or Easement Donors)

Thomas, Louise, and
Suzette Beckett
Ron Beitzel
Jon Bennett
Doug and Marilyn Boldon
C. Bernard and Victoria Bush
Richard Carter
Gary and Kaye Clarke
William and Lori Custer
Dick and Ann Fryman
Granville Township
Robert and Deborah Harnden
Kayla Hughes
Lee and Katherine Larson
Jay Matthews and Patricia James
Robert and Susan Morrison
Larry and Janet Neeley
Park Trails/MI Homes
T.J. Evans Foundation
Ilse Winter and John Miller

Students

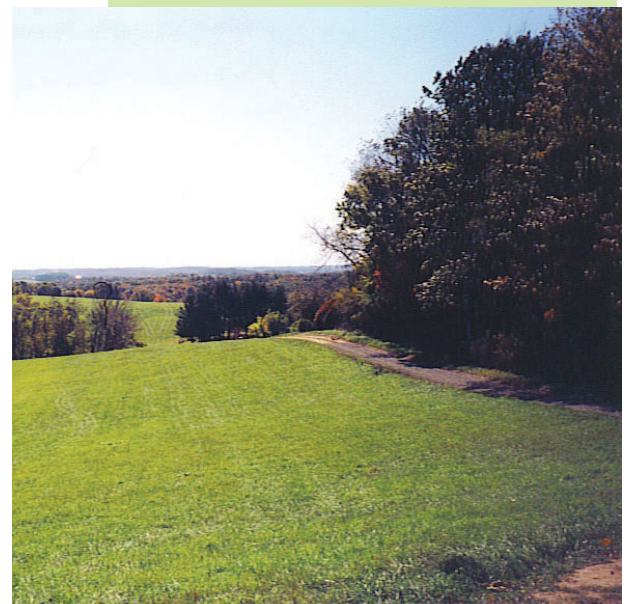
Breanna Aves
Jane Bailey
Anna Cahall
Casper Chen
Hannah Hartshorn
Paige Hartshorn
Shelby Heist
Madeline Murphy

Business/Organization

ADR & Associates
Buckeye Lake Winery
Capuano's Pizza

Central Ohio Technical College
Equine Veterinary Dental Services
First Federal Savings
Granville Vet Clinic
(Doug Wagner)
Granville Garden Club
Granville Milling Company
Jodi Melfi Design Ltd.
John Hinderer Honda
Homestead Beer Company
Hound and Wildlife Habitat
and Welfare Fund
Kegler Brown Hill + Ritter
Kendal at Granville
Licking County Soil and Water
Conservation District
Licking Memorial Health Systems
Matesich Distributing Company
Newark Eagles Troop #387
The Energy Cooperative
The Ohio State
University - Newark
Park National Bank
Reese Pyle Meyer PLL
Ross Granville Market
Smart Services, Inc.

* indicates deceased





Licking Land Trust
 P.O. Box 196
 Granville, OH 43023

LICKING LAND
 TRUST

740-587-4104
 lickinglandtrust@gmail.com
www.lickinglandtrust.org

Board

Jim Bidigare, Chair
 Jeremy King, Vice Chair
 Lyn Boone, Treasurer
 Wendy Bittel Kyle Dixon Amy Mock
 Shana Byrd Melissa Gilbert Doug Spieles
 Paul Davidson Tom Henshaw Rebecca Swab

Administrative Director

Jen Jacquot

Newsletter

Amy Mock, editor
 Jodi Melfi Design, layout

The mission of the Licking Land Trust is the preservation and permanent protection of central Ohio green spaces – wetlands, woods, farmlands, riparian corridors, and scenic vistas – and education about the importance of green spaces and their conservation, all for the public benefit.



Join The Licking Land Trust

Renew your membership, join, or contribute online at lickinglandtrust.org

Detach and mail this completed form with your check to:
 Licking Land Trust
 P.O. Box 196
 Granville, OH 43023



Donate
 securely
 online.

Name: _____

Email: _____

Address: _____

City, State, Zip: _____

Phone: _____

Membership Levels:

- Student: \$10 Conservator: \$250-499 Partner: \$2,500-4,999
- Individual: \$50 Steward: \$500-999 Visionary: \$5,000
- Family: \$50 Leader: \$1,000-2,499